

## SCM24 Auto Nozzle Cleaner



SCM-24 using the hydrodynamic water fragmentation, producing very fine water mist, with the speed of sound ( $V = 360\text{m/s}$ ) to form a strong momentum jet to the nozzle, nozzle for cleaning at the top of the formation of a continuous field, crushing the internal surface of the dirt (the nozzle will not be damaged because of its independent device), during the cleaning process the used cleaning water (deionized water or distilled water) automatic direct emissions.

## SCM24 Description

### Cleaning Principle:

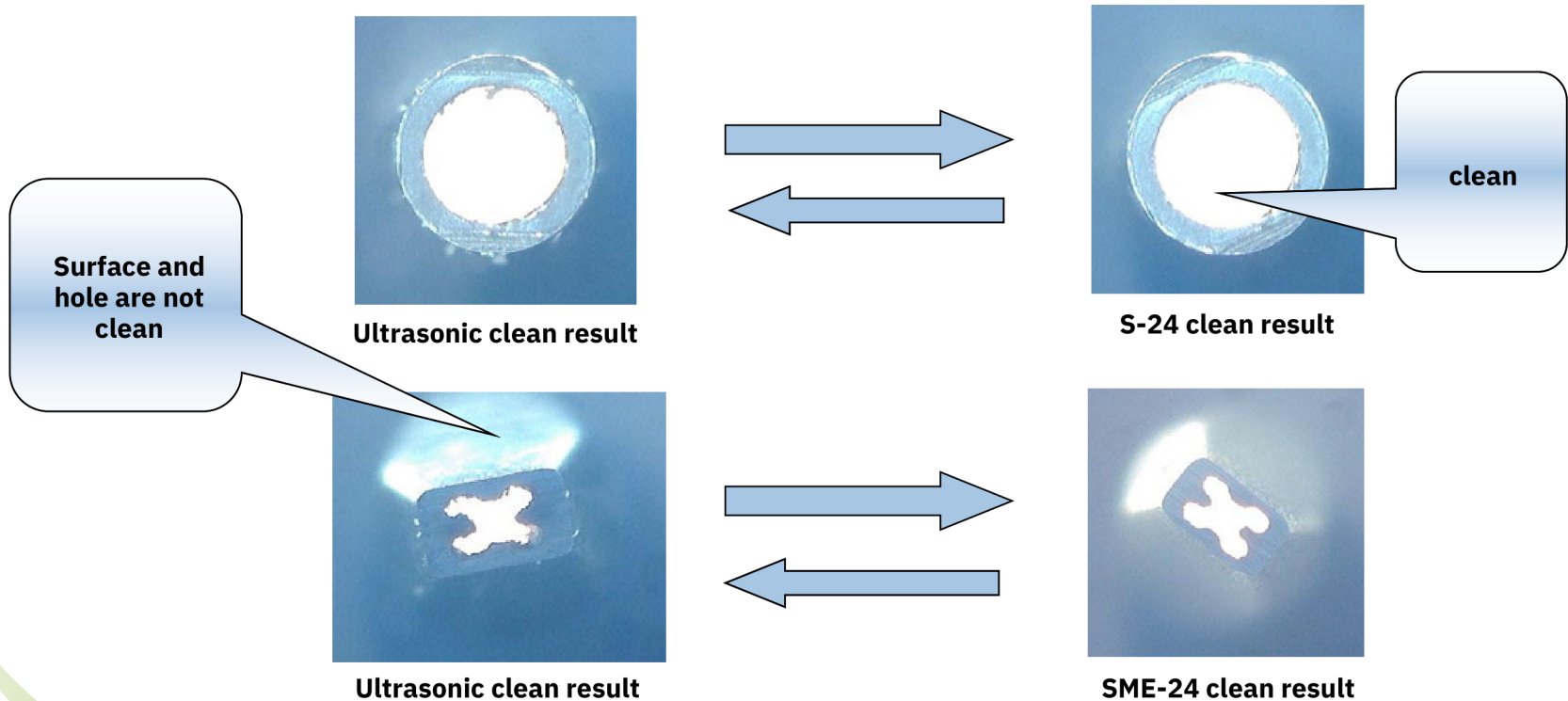
With special mechanical design, SCM-24 using the hydrodynamic water fragmentation, producing very fine water mist, with the speed of sound ( $V = 360\text{m/s}$ ) to form a strong momentum jet to the nozzle, nozzle for cleaning at the top of the formation of a continuous field, crushing the internal surface of the dirt (the nozzle will not be damaged because of its independent device), during the cleaning process the used cleaning water (deionized water or distilled water) automatic direct emissions.

### Functions:

1. Thoroughly clean the dirt on nozzles which ultrasonic cleaner can not clean.
2. Strong clean power for nozzles, even the smallest nozzle hole.
3. Very good cleaning effectiveness, extend lifespan of the nozzles.
4. No damage to the coating layer of the nozzle and its reflector panel.
5. Only use DI water or distilled water.
6. Auto clean and dry.
7. Easy operation.
8. Right for all kind of mounter nozzles.

SCM24 Description

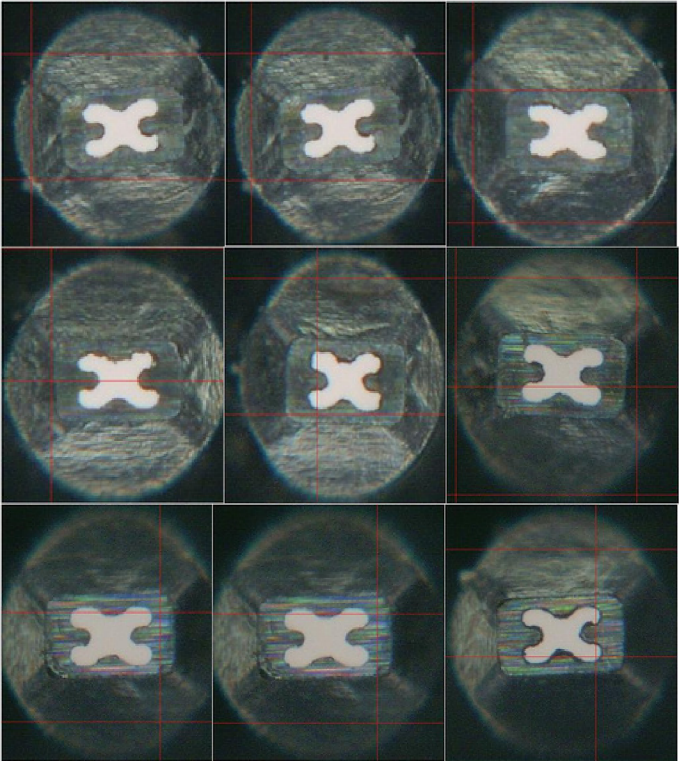
Cleaning results compare with Ultrasonic cleaner.



**SCM24 Description**

**Cleaning result compared with Ultrasonic cleaner.**

S-24 cleaner  
Panasonic225 after cleaning






Japan cleaner  
Panasonic225 after cleaning









## SCM24 Description

### Cleaning result A

clean time	nozzle type	before clean	after clean	Remarks
60s	110Snuzzle			normal dirt nozzles, when pressure is about 0.5Mpa. 1st time clean about 1 minute;2nd time clean time reduce to 90s
				
				

**SCM24 Description**
**Cleaning result B**

clean time	nozzle type	before cleaning	after cleaning	remarks
90s	225 nozzle			normal dirt nozzles, when pressure is about 0.5Mpa. 1st time clean about 2 minute;2nd time clean time reduce to 90s
				
				

**SCM24 Description**

ITEM	SME-24 SPEC
Air supply	0.5~0.7Mpa
Power supply	AC220V,1A
Clean liquid	Purified water or DI water
Clean time	3~6min
Dry time	1~3min
Spray pressure	≤0.55Mpa
Clean liquid consumption	≤150cc/Hour
Nozzle range	Min01005~Max
Jig spec	diameter 24holes
Machine size	L665*W555*H475(mm)
Machine weight	30KG

## Other Cleaning Machine



**Mobilephone camera  
module cleaning machine**



**IC Tray auto cleaning machine**



## PCB Bare Board Cleaner



**Adhesive rolling cleaner**



**Brush+vacuum cleaner**



**PCB surface Cleaner  
Composite type**

## SMT Cleaning Machine



SCM800  
Electric stencil  
cleaning machine



S-1688  
Pneumatic stencil  
cleaning machine



SCM5200  
Wave oven fixture  
cleaning machine



SCM55600D Offline  
PCBA cleaning  
machine



SCM6200 Nozzle  
cleaning machine



SCM220 Oline PCBA  
cleaning machine



SCM24 Squeegee  
cleaning machine

## Screen printing cleaning machine—PCB, LCD, TP, film printing



SCM3100 Screen  
cleaning machine



SCM4100 Screen developing  
and stripping machine



SCM5100 Squeegee  
cleaning machine

## WELCOME INQUIRY

Please visit

[www.smthelp.com](http://www.smthelp.com)

Find us more

<https://www.facebook.com/autoinsertion>

Know more our team

<https://cn.linkedin.com/in/smtsupplier>

Welcome to our factory in Shenzhen China

See more machine working videos, please Youtube

[Auto Insertion](#)

Google

Auto+insertion, to get more informations

Looking forward to your email

[info@smthelp.com](mailto:info@smthelp.com)